

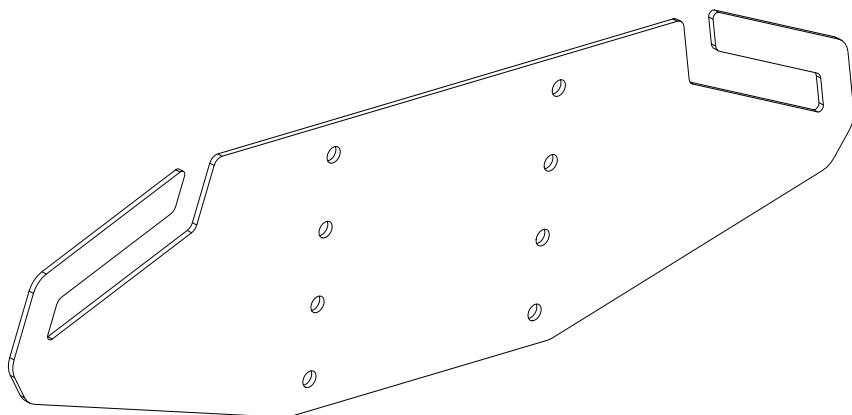
MPS BELT HARNESS HOLDER

Instruction Manual
Bedienungsanleitung
Mode d'emploi

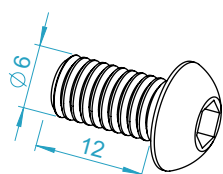
PARTS

[dimensions in mm / different scales]
No extra or spare parts listed!

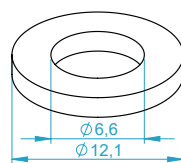
1x



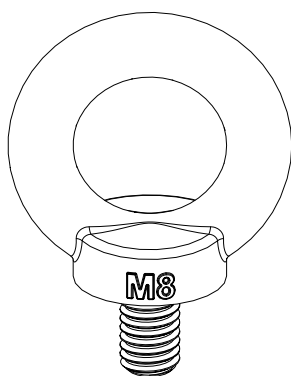
2x



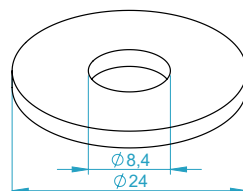
2x



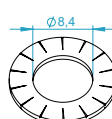
4x



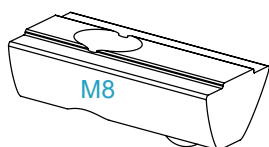
4x



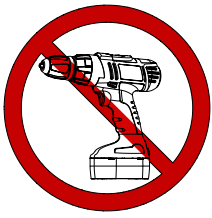
8x



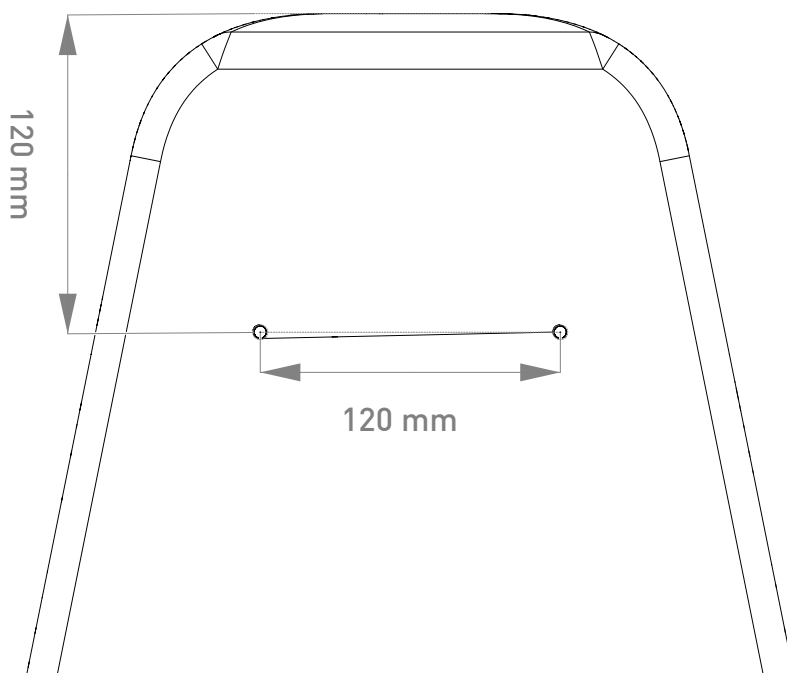
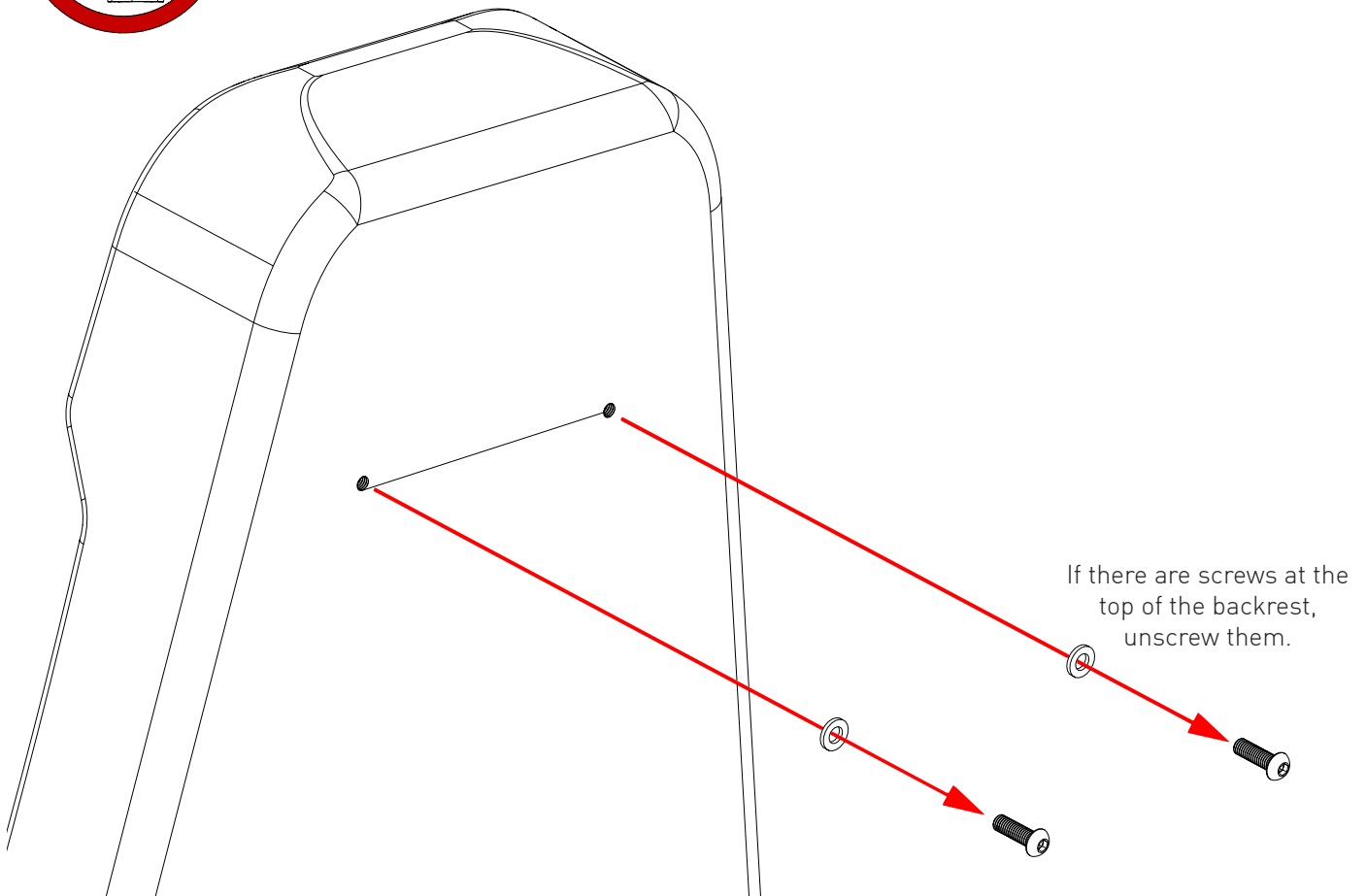
4x



ASSEMBLY

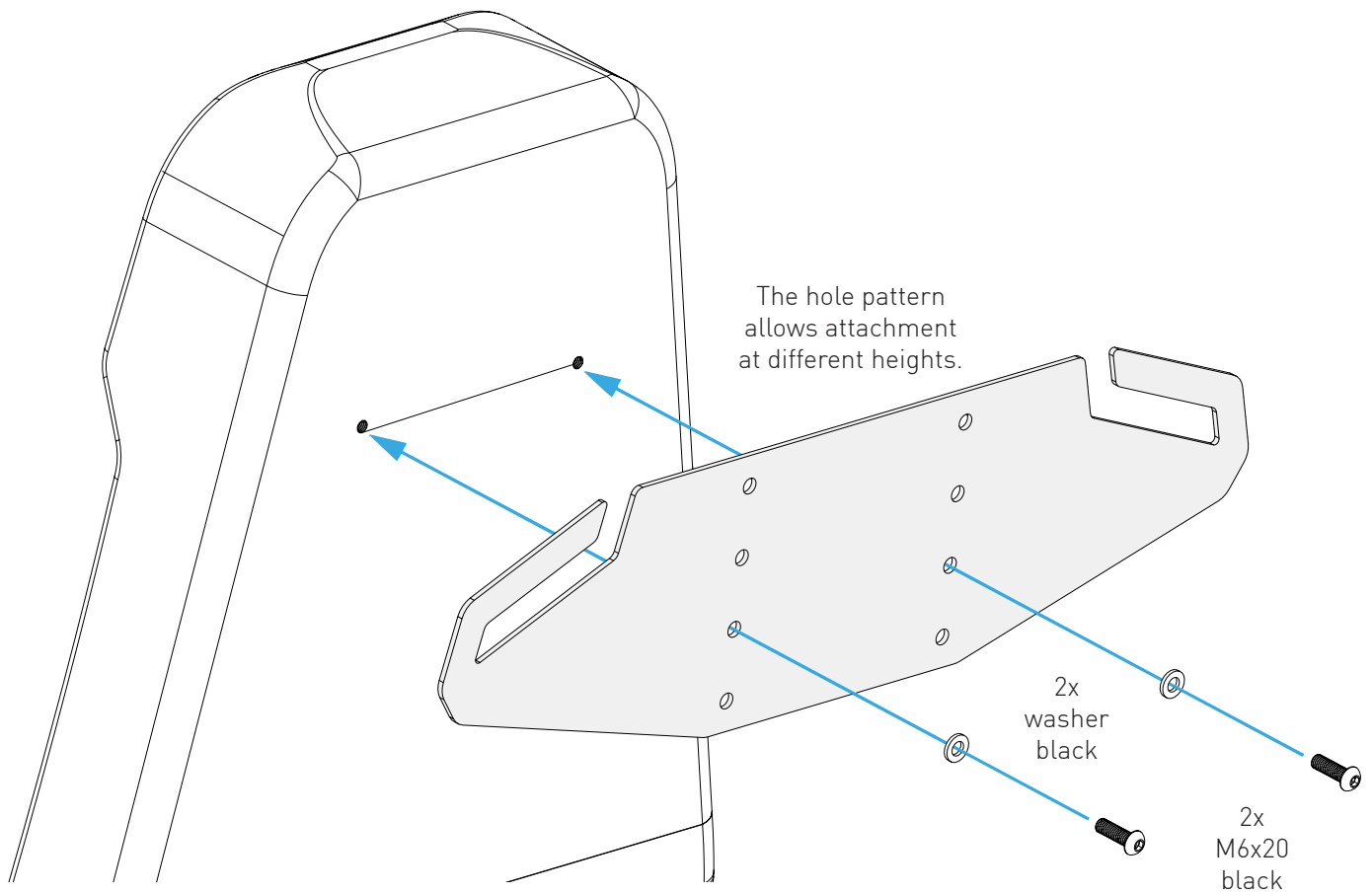


It is not recommended to use power tools.
Please make sure the screws are running smoothly in the threads.
If the screw cannot be screwed in easily, unscrew it and start again.
Do not apply too much pressure when screwing.



If no threaded holes are visible at the top of the backrest, they are under the fabric or leather. In this case you have to make a cut in the fabric or leather. The threaded holes are 120mm from the top edge and are 120mm apart.

Feel the positions with your finger or a pointed object.
Make 2 small cross cuts with a sharp knife.
Carefully cut away excess material.



For information:
This is how the threads look in the backrest panel.

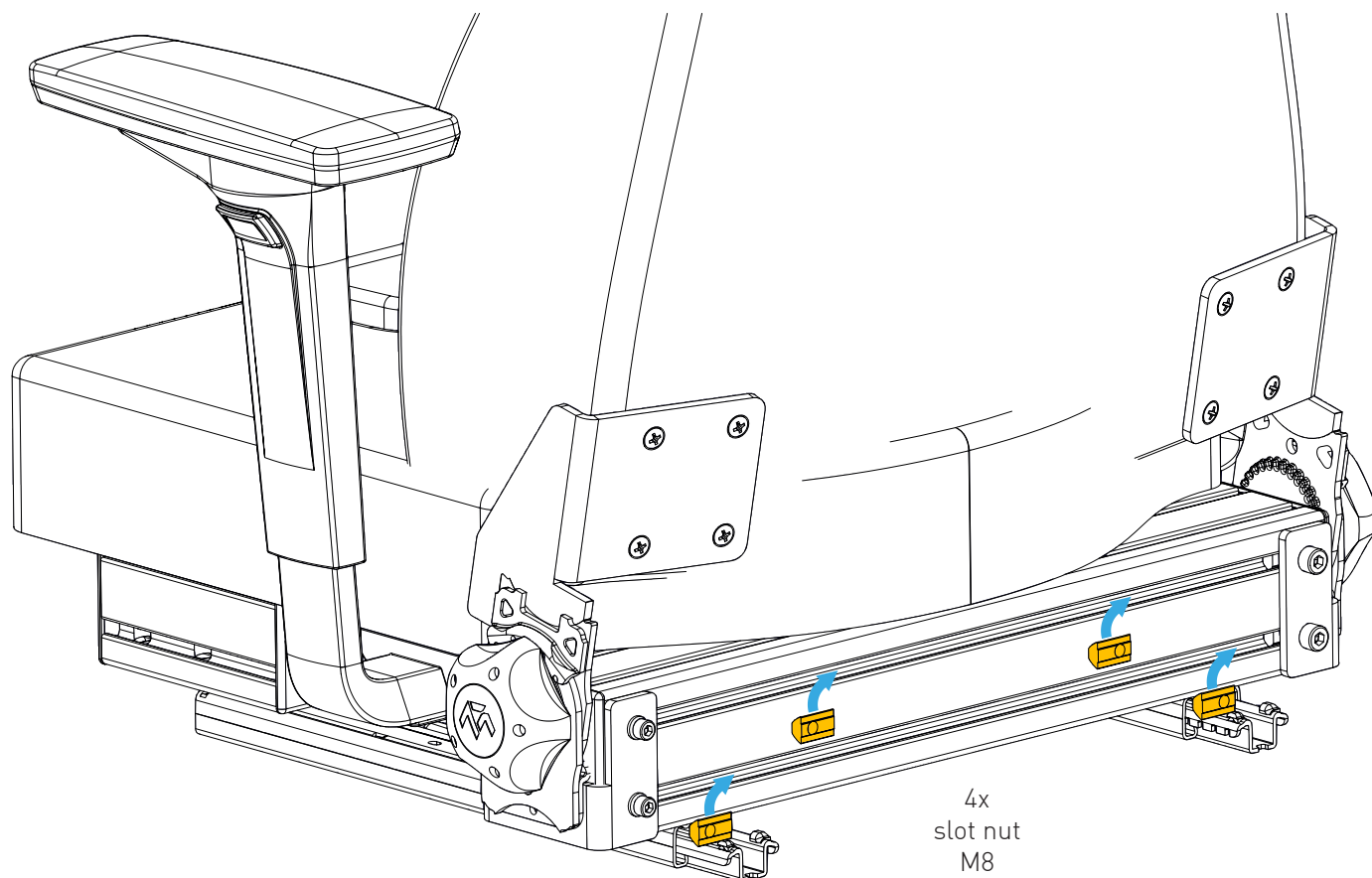
Rear side (where you assemble the belt holder)

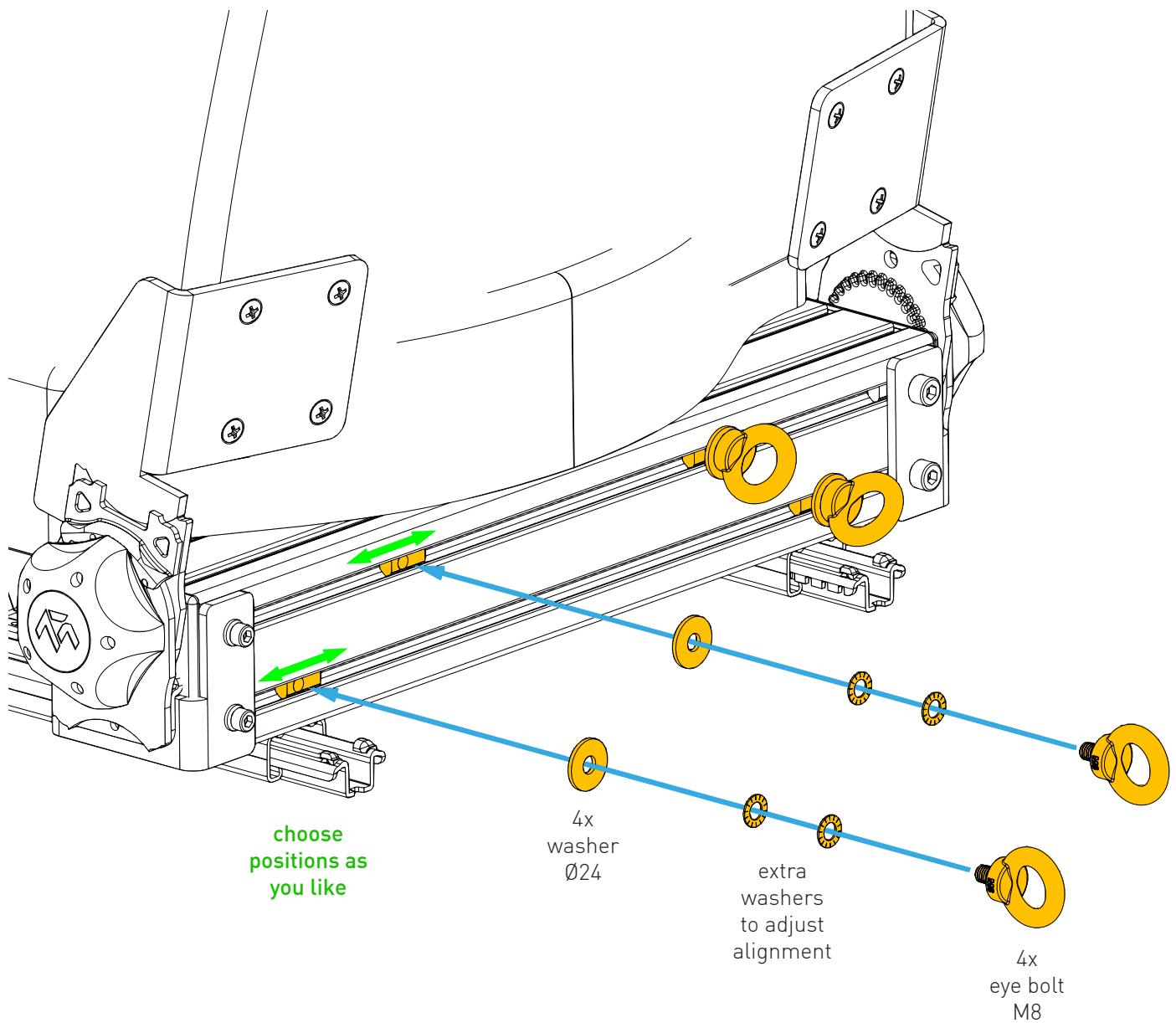


Front side (where you put your head)



ASSEMBLY OF THE EYE BOLTS FOR YOUR BELT HOOKS





The alignment of the ring bolts after tightening is random (thread length given by engineer standard).
 To adjust the alignment extra washers can be used.
 If the ring screw is not tightened, this is not a problem as it cannot turn and loosen further when the belt is hooked.

